

# Oklahoma City University Law Library

## Lower Level Map

### Lower Level South

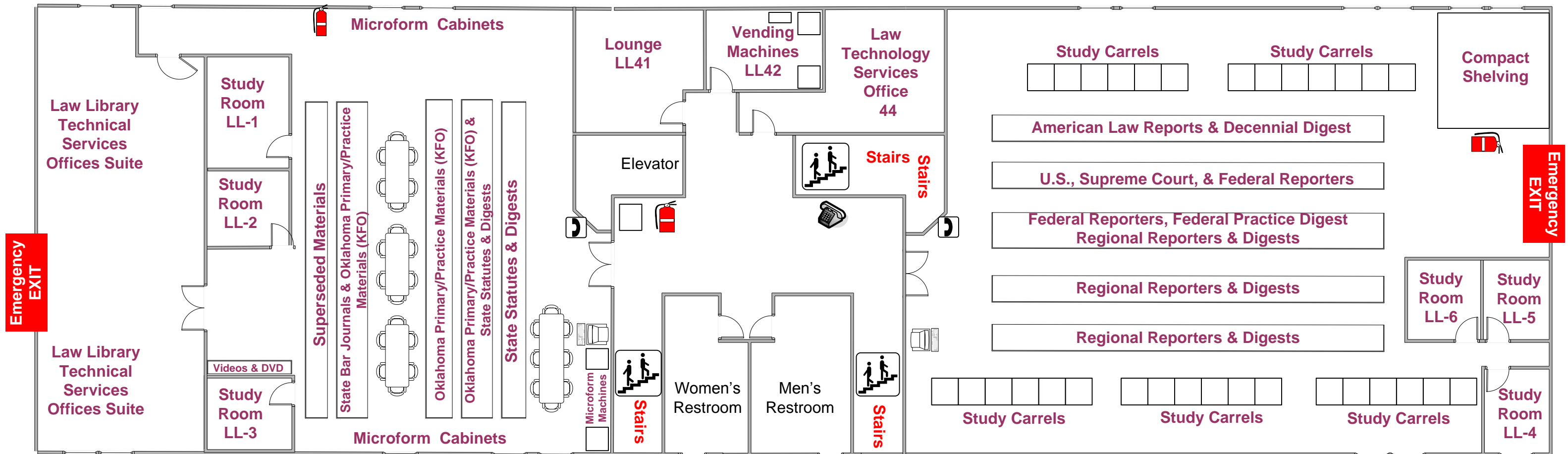
The lower level South wing contains statutes from Oklahoma, Texas, Kansas, Missouri, Arkansas, Colorado, New Mexico, Wyoming, Utah, New York, Delaware, California, Illinois, Louisiana, and Florida. The Oklahoma and Texas Digests and a collection of Oklahoma materials are located here. The library's microform collection, Oklahoma CLE materials and 3 study rooms are also found on this wing. **TWO EMERGENCY EXITS**



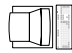

### Lobby

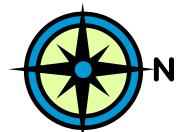
The lounge area is adjacent to the lower level lobby. It contains a large screen TV with cable connection and a DVD/VCR player. Seating for studying, eating, or relaxing is available. Vending machines containing soft drinks, candy, and snacks, and several varieties of coffee are located nearby. A microwave is also available. **THREE EMERGENCY EXITS**

### Lower Level North

The lower level North wing contains Supreme Court, Federal, Pacific, and Southwestern Reporters and the following Digests: U.S. Supreme Court, Federal Practice, Pacific, and Decennial. The wing also contains the American Law Reports (ALRs), compact shelving units, study carrels, and three study rooms. All study carrels and rooms have internet ports and electrical outlets. This wing is designated a quiet study wing. Conversation is to be minimal and computers are to be silenced. **TWO EMERGENCY EXITS**



-  Fire Extinguisher
-  Reference Librarian Help Line
-  Library Catalog, Databases, and Internet Terminal
-  Courtesy Phone (5 min. max)



# Oklahoma City University Law Library

## First Floor Map

### One South Periodicals Wing

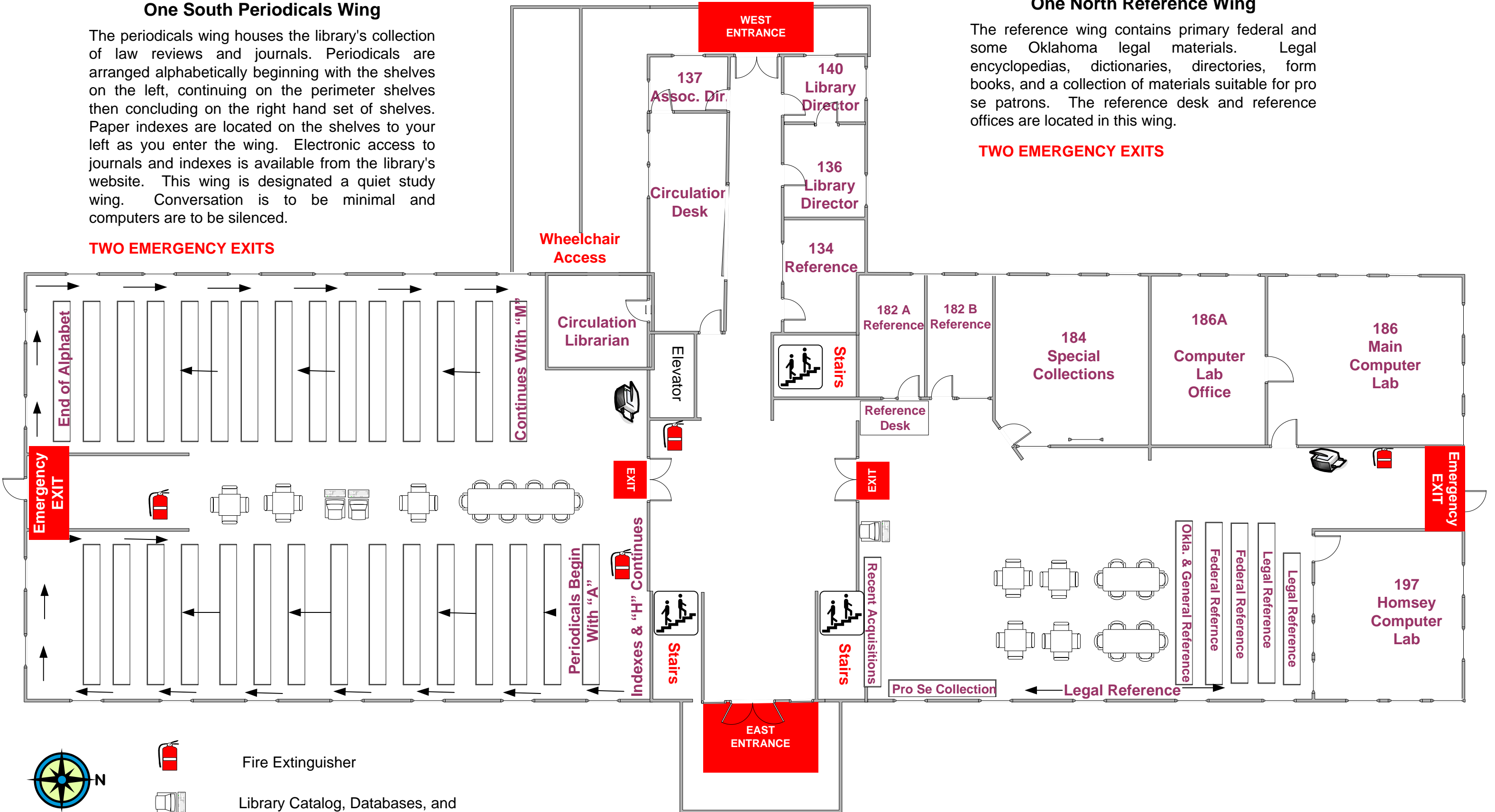
The periodicals wing houses the library's collection of law reviews and journals. Periodicals are arranged alphabetically beginning with the shelves on the left, continuing on the perimeter shelves then concluding on the right hand set of shelves. Paper indexes are located on the shelves to your left as you enter the wing. Electronic access to journals and indexes is available from the library's website. This wing is designated a quiet study wing. Conversation is to be minimal and computers are to be silenced.

### One North Reference Wing

The reference wing contains primary federal and some Oklahoma legal materials. Legal encyclopedias, dictionaries, directories, form books, and a collection of materials suitable for pro se patrons. The reference desk and reference offices are located in this wing.

**TWO EMERGENCY EXITS**

**TWO EMERGENCY EXITS**



Fire Extinguisher



Library Catalog, Databases, and Internet Terminal



Photocopy Machine

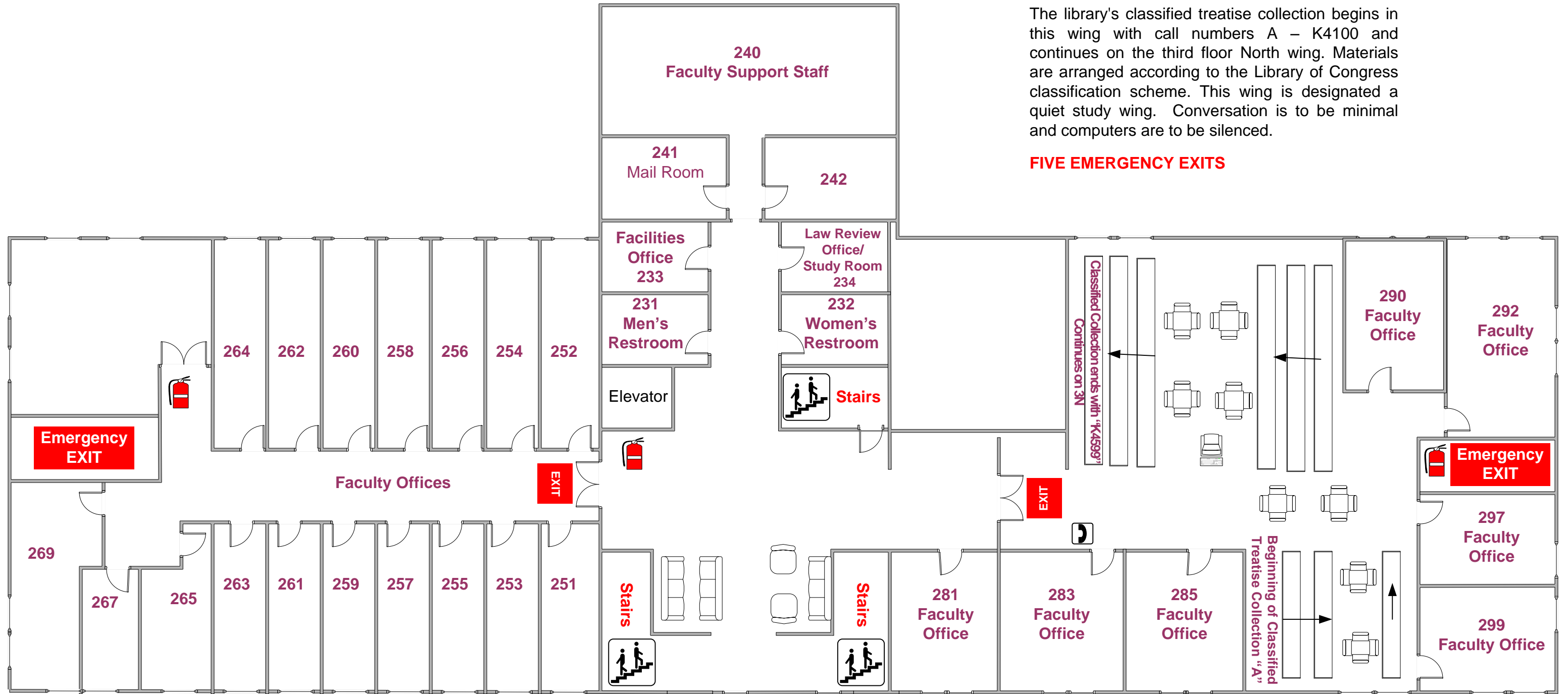
# Oklahoma City University Law Library


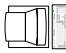

## Second Floor Map

### Two North Wing

The library's classified treatise collection begins in this wing with call numbers A – K4100 and continues on the third floor North wing. Materials are arranged according to the Library of Congress classification scheme. This wing is designated a quiet study wing. Conversation is to be minimal and computers are to be silenced.

**FIVE EMERGENCY EXITS**



-  Fire Extinguisher
-  Library Catalog, Databases, and Internet Terminal
-  Reference Librarian Help Line

# Oklahoma City University Law Library

## Third Floor Map

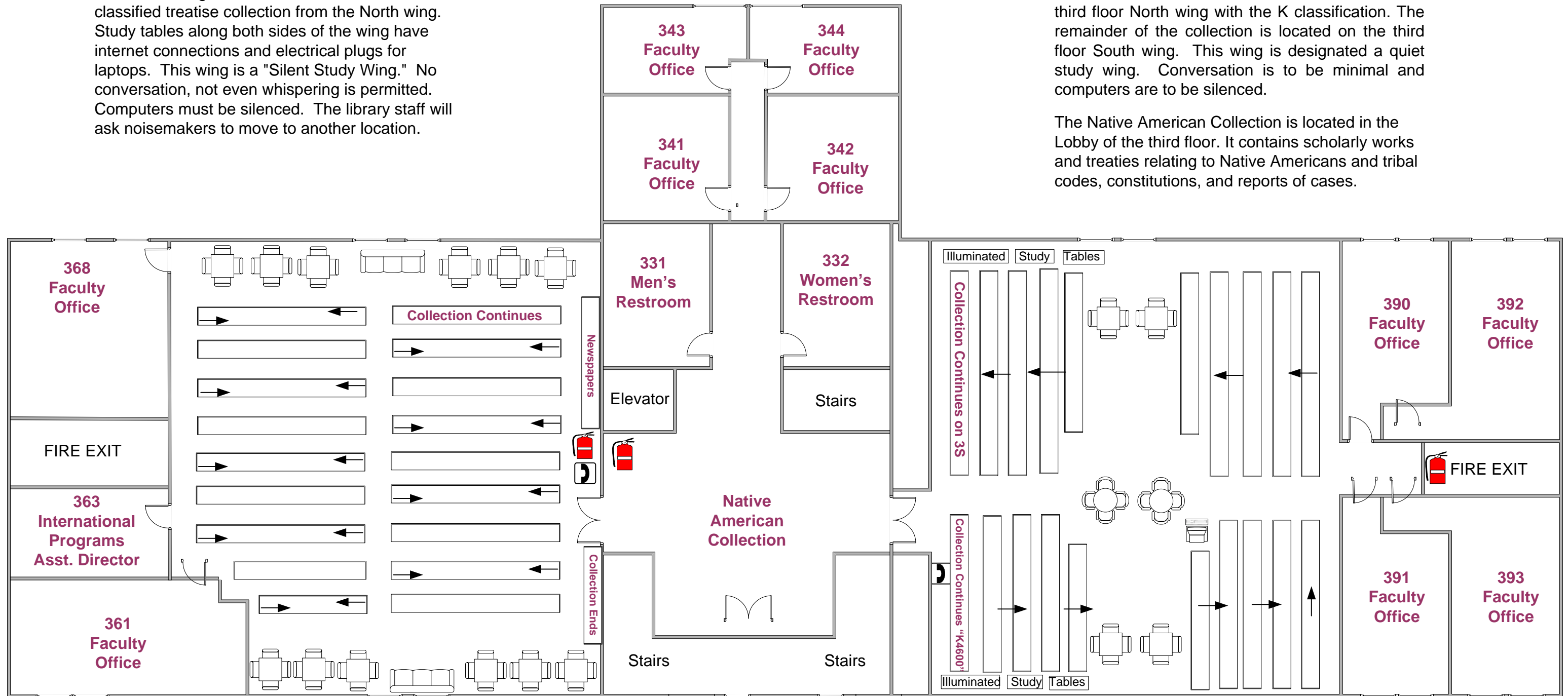
### Three South Wing



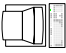

The South wing of the third floor continues the classified treatise collection from the North wing. Study tables along both sides of the wing have internet connections and electrical plugs for laptops. This wing is a "Silent Study Wing." No conversation, not even whispering is permitted. Computers must be silenced. The library staff will ask noisemakers to move to another location.

### Three North Wing & Lobby

The classified treatise collection continues on the third floor North wing with the K classification. The remainder of the collection is located on the third floor South wing. This wing is designated a quiet study wing. Conversation is to be minimal and computers are to be silenced.

The Native American Collection is located in the Lobby of the third floor. It contains scholarly works and treaties relating to Native Americans and tribal codes, constitutions, and reports of cases.



-  N
-  Fire Extinguisher
-  Library Catalog, Databases, and Internet Terminal
-  Reference Librarian Help Line