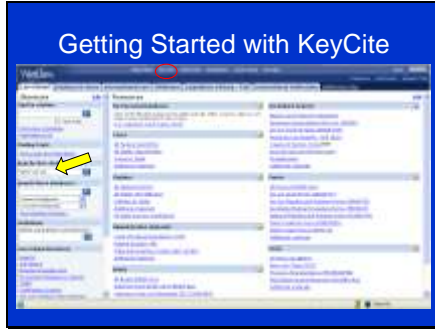


Slide 22



Slide 23



Slide 24

• <http://scontent.westlaw.com/research/ppts/KeyCite%20Cases%20History.ppt>

Use KeyCite History to Determine Whether Your Case Is Good Law

KeyCite History includes:

- Direct History of the case, which traces your case through the appellate courts.
- Prospective Indirect History, which includes cases outside the direct history of the case that might have a negative impact on the stability of your case.

Slide 31



Slide 32

Reading Beyond the Signs and Flags

- Negative treatment does not necessarily mean a case may not be cited.
- Lack of negative treatment doesn't always indicate a "good case".
 - ABC, Implicit Citation, or Underpinning problems. Alan Wolf and Lynn Wishart, *Shepard's® and KeyCite® Are Flawed (or Maybe It's You)*, N.Y. State Bar Ass'n J., Sept. 2003, 24-31.
 - Use the Table of Authorities to help overcome this issue.

Slide 33

A-B-C Problem

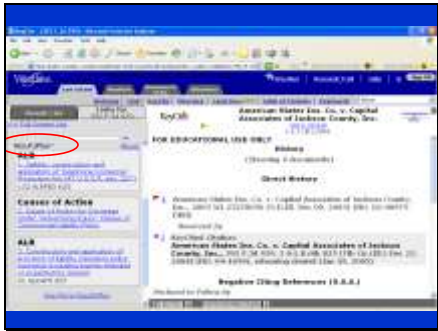
 A diagram illustrating the "A-B-C Problem" in legal research. It shows a flow from A to B to C. A red circle is drawn around B, and a red arrow points from B to C. Below the diagram, there is a red box with the text "Negative Treatment".

Slide 55

Display/Function Preferences
(AKA - What I Like)

- Direct History - Graphic display in Keycite!
- Summary Panel and Focus in Shepard's!
- Results Plus and ALR links in Keycite.

Slide 56



Slide 57

Display/Function Preferences
(AKA - What I Like)

- Direct History - Graphic display in Keycite! (A picture is worth a thousand words)
- Summary Panel and Focus in Shepard's!
- ResultsPlus and ALR links in Keycite.
- Depth of Analysis Symbols in Keycite.
