

Oklahoma City University Law Library

Lower Level Map

Lower Level South

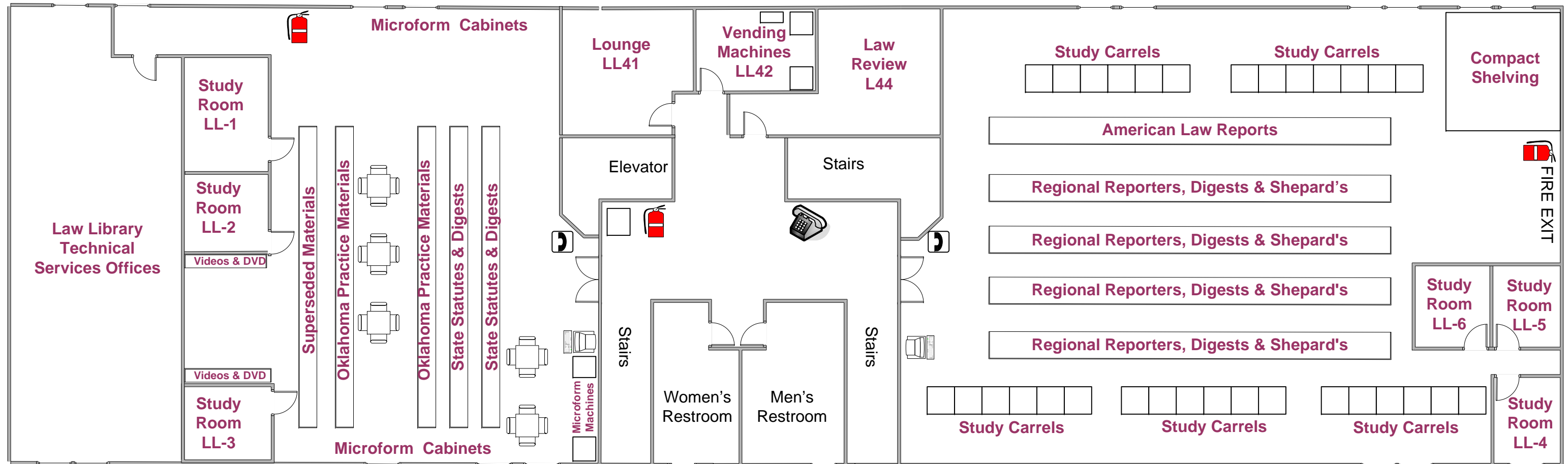
The lower level South wing contains statutes from all fifty states and digests from fifteen states. The library's microform collection, Oklahoma CLE materials and 3 study rooms are also found on this wing.


Lobby

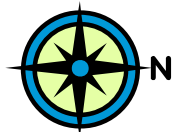
The lounge area is adjacent to the lower level lobby. It contains a TV/VCR unit with cable television and seating for studying, eating, or relaxing. Vending machines containing soft drinks, candy, and snacks, and several varieties of coffee are located nearby. A microwave is also available.

Lower Level North

The lower level North wing contains all regional reporters, regional Shepard's and digests for the Atlantic (no longer updated), North Western, Pacific and South Eastern regions. Reporters, Shepard's and digests for California and New York are located here. The wing also contains the American Law Reports (ALRs), compact shelving units, study carrels, and three study rooms. All study carrels and rooms have internet ports and electrical outlets. This wing is designated a quiet study wing. Conversation is to be minimal and computers are to be silenced.



-  Fire Extinguisher
-  Reference Librarian Help Line
-  Library Catalog, Databases, and Internet Terminal
-  Courtesy Phone (5 min. max)



Oklahoma City University Law Library

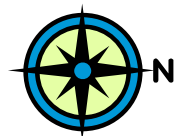
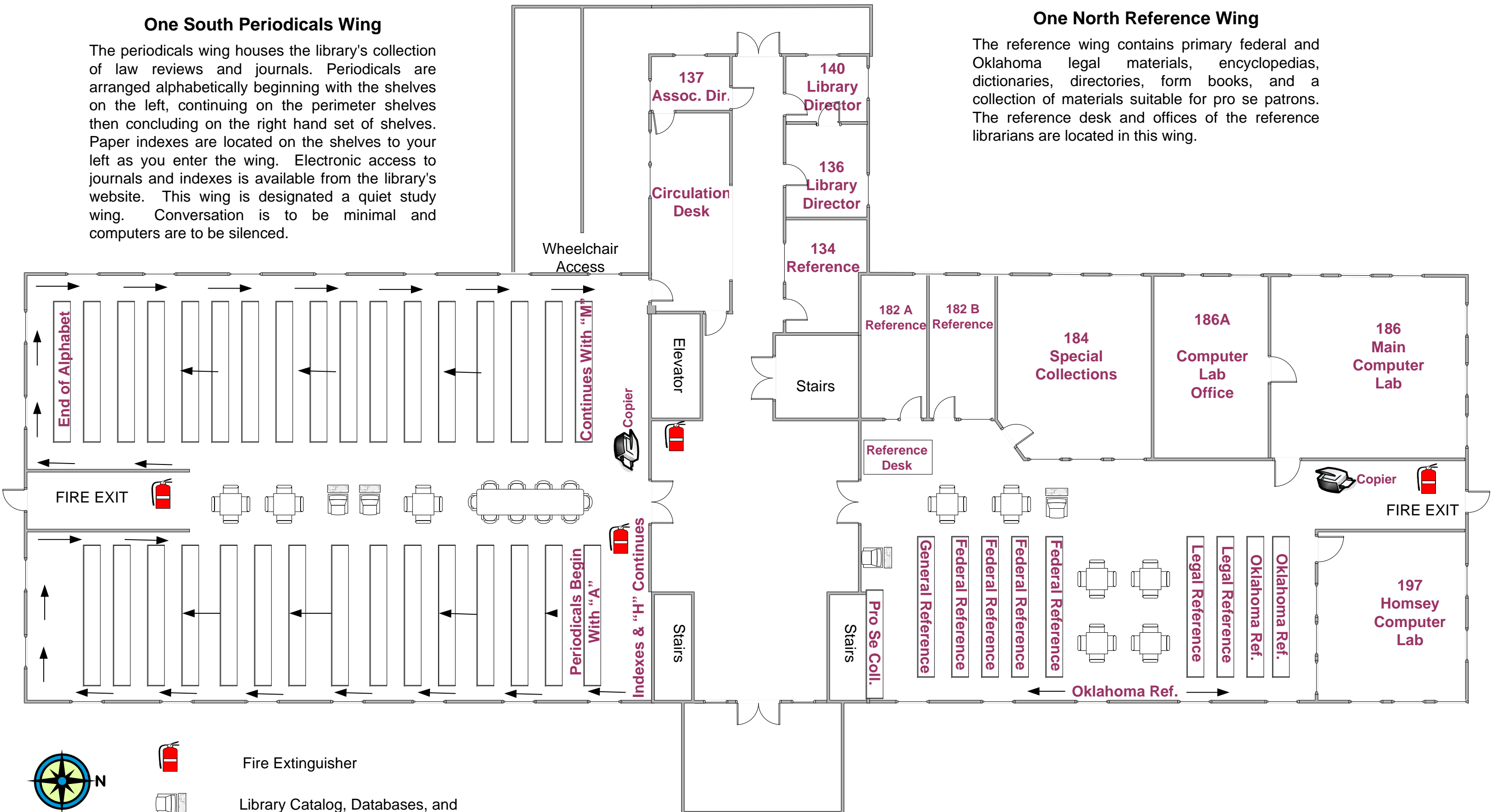
First Floor Map

One South Periodicals Wing

The periodicals wing houses the library's collection of law reviews and journals. Periodicals are arranged alphabetically beginning with the shelves on the left, continuing on the perimeter shelves then concluding on the right hand set of shelves. Paper indexes are located on the shelves to your left as you enter the wing. Electronic access to journals and indexes is available from the library's website. This wing is designated a quiet study wing. Conversation is to be minimal and computers are to be silenced.

One North Reference Wing

The reference wing contains primary federal and Oklahoma legal materials, encyclopedias, dictionaries, directories, form books, and a collection of materials suitable for pro se patrons. The reference desk and offices of the reference librarians are located in this wing.



Fire Extinguisher



Library Catalog, Databases, and Internet Terminal



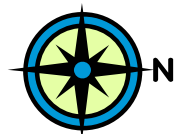
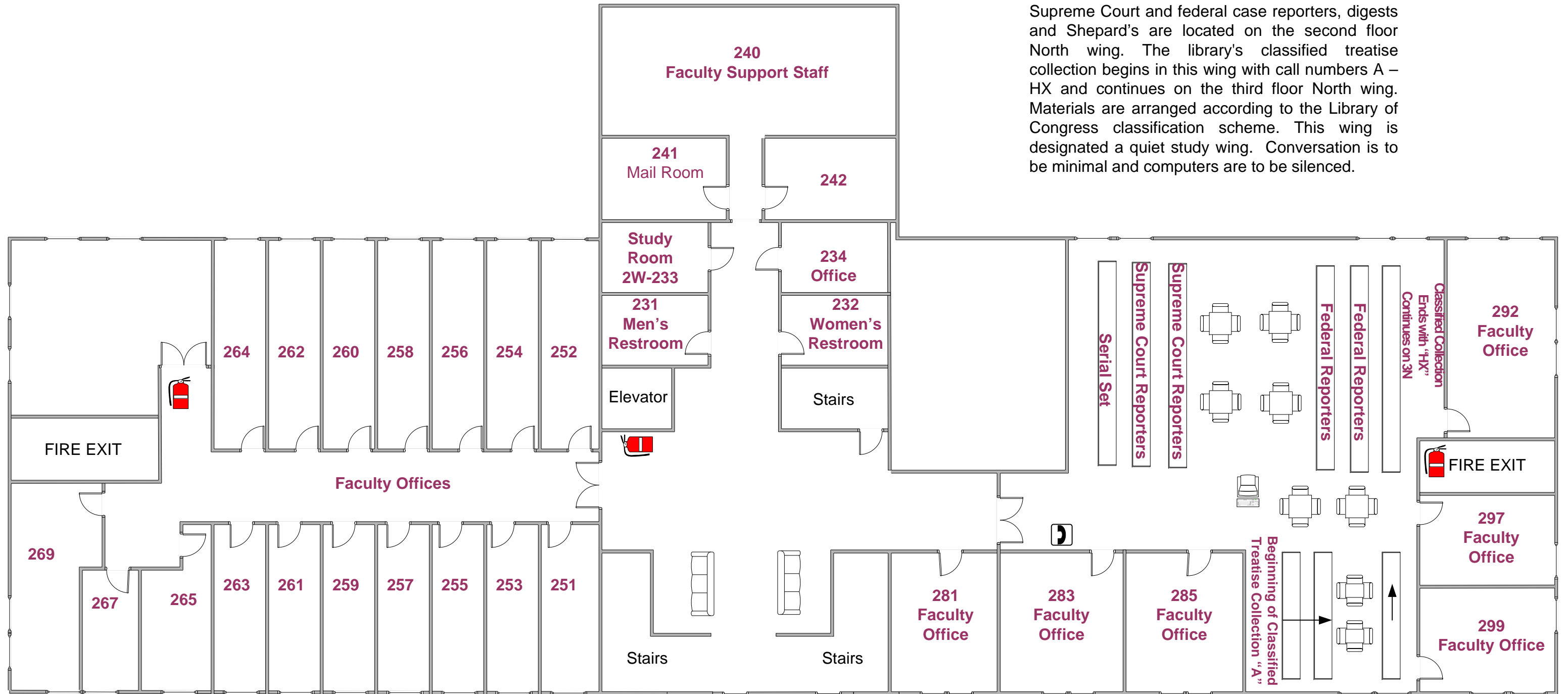
Photocopy Machine

Oklahoma City University Law Library

Second Floor Map

Two North Wing

Supreme Court and federal case reporters, digests and Shepard's are located on the second floor North wing. The library's classified treatise collection begins in this wing with call numbers A – HX and continues on the third floor North wing. Materials are arranged according to the Library of Congress classification scheme. This wing is designated a quiet study wing. Conversation is to be minimal and computers are to be silenced.



Fire Extinguisher



Library Catalog, Databases, and Internet Terminal



Reference Librarian Help Line

Oklahoma City University Law Library

Third Floor Map

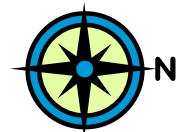
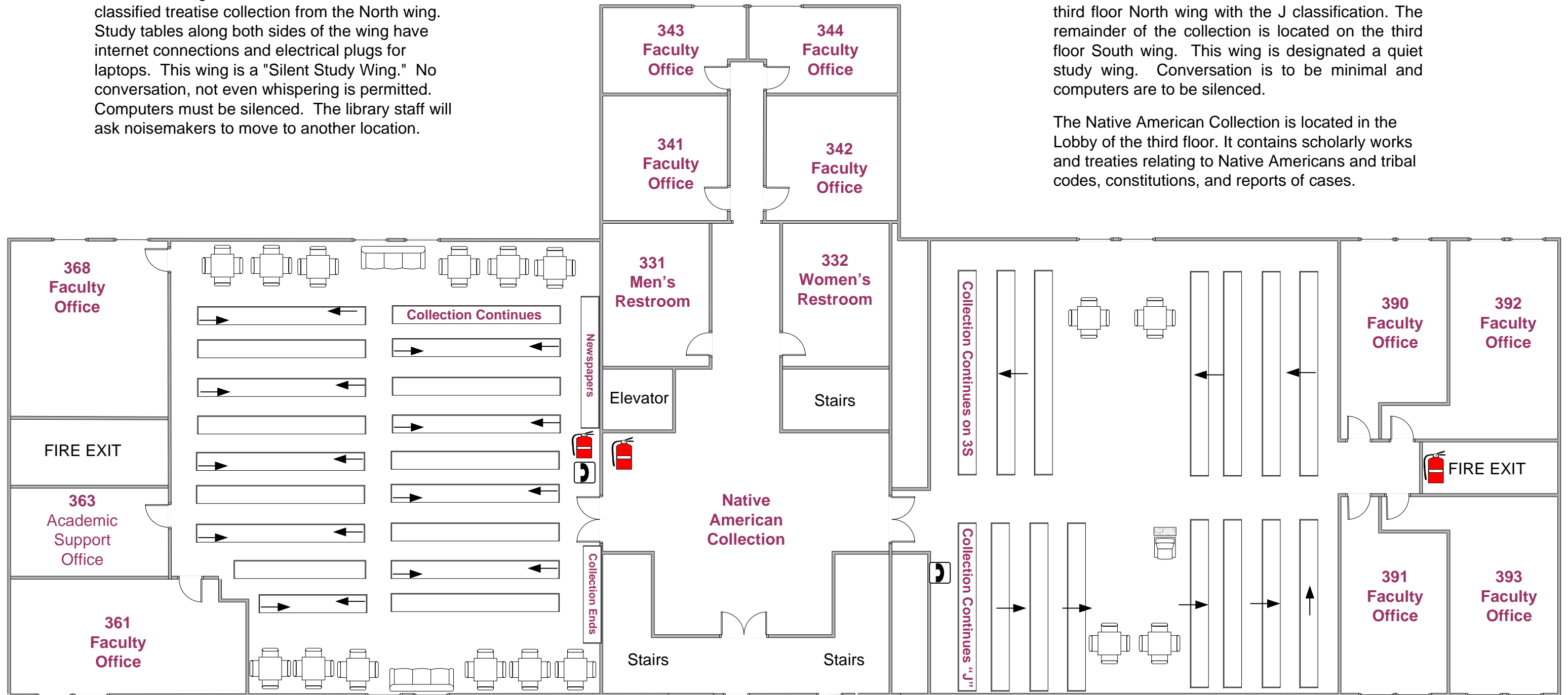
Three South Wing

The South wing of the third floor continues the classified treatise collection from the North wing. Study tables along both sides of the wing have internet connections and electrical plugs for laptops. This wing is a "Silent Study Wing." No conversation, not even whispering is permitted. Computers must be silenced. The library staff will ask noisemakers to move to another location.

Three North Wing & Lobby

The classified treatise collection continues on the third floor North wing with the J classification. The remainder of the collection is located on the third floor South wing. This wing is designated a quiet study wing. Conversation is to be minimal and computers are to be silenced.

The Native American Collection is located in the Lobby of the third floor. It contains scholarly works and treaties relating to Native Americans and tribal codes, constitutions, and reports of cases.



Fire Extinguisher



Library Catalog, Databases, and Internet Terminal



Reference Librarian Help Line